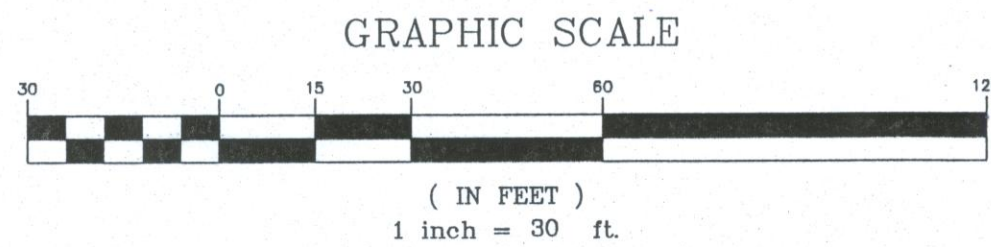




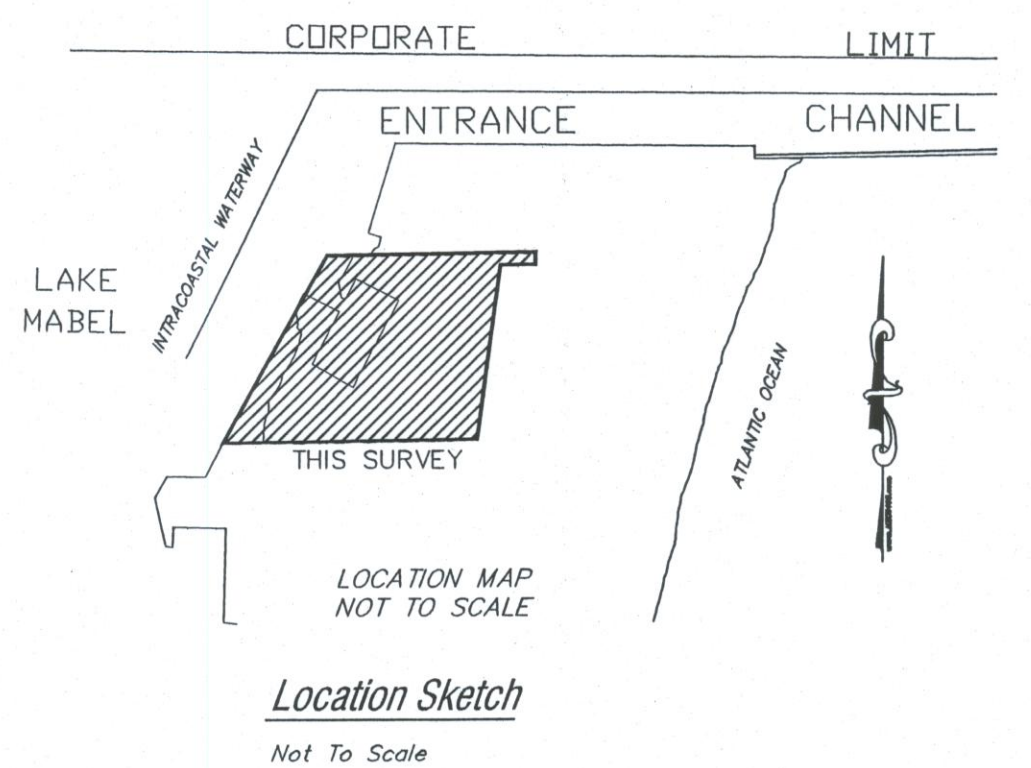
prepared by  
**McLAUGHLIN ENGINEERING COMPANY (LB#285)**  
400 J.W. McLaughlin AVENUE (N.E. 3rd AVENUE),  
FORT LAUDERDALE, FLORIDA 33301  
PHONE: (954) 763-7611 FAX: (954) 763-7615



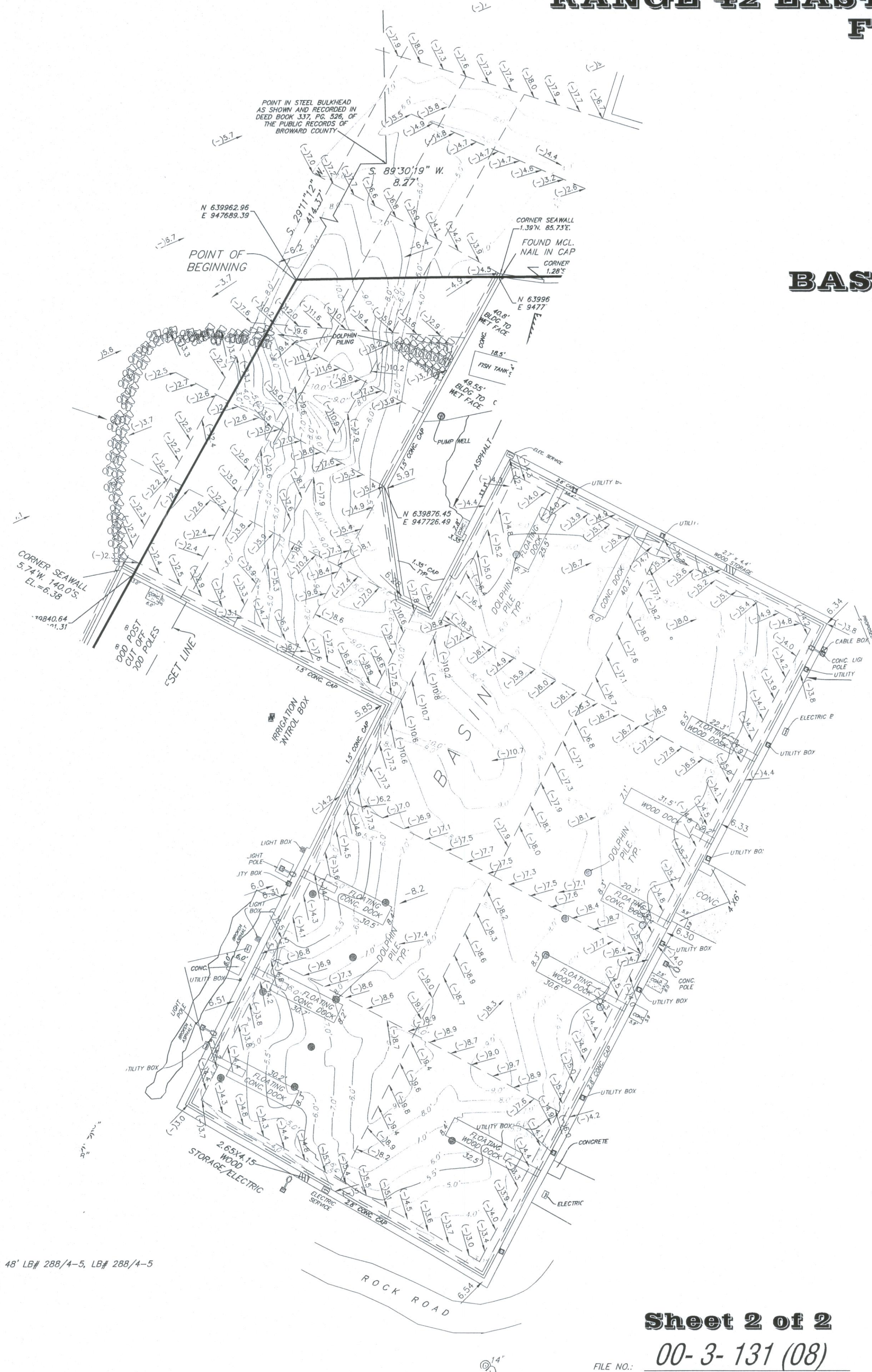
# TOPOGRAPHIC & BATHOMETRIC SURVEY

## NOVA SOUTHEASTERN UNIVERSITY PORTION OF GOVERNMENT LOT 2, SECTION 24, TOWNSHIP 50 SOUTH, RANGE 42 EAST, BROWARD COUNTY, FLORIDA

Sheet 2 of 2



### BASIN DETAIL



#### NOTES:

- This survey reflects all easements and rights-of-way, as shown on above referenced record plot(s). The subject property was not abstracted for other easements road reservations or rights-of-way of record by McLaughlin Engineering Company.
- Underground improvements if any not located.
- This drawing is not valid unless sealed with an embossed surveyors seal.
- Legal description and boundary survey information does not infer Title or Ownership.
- All iron rods 5/8", unless otherwise noted.
- Reference Bench Mark: Concrete monument at S.E. corner of Coast Guard station. Elevation= 12.29
- Elevations shown refer to National Geodetic Vertical Datum (1929), and are indicated thus: Elev. = 6.72.
- This property lies in Flood Zones "AE", Elevation = 8.0, and "AE", Elevation = 9.0, per Flood Insurance Rate Map No. 1201100307 F, Community Panel No. 125113, dated August 18, 1992, Index Map dated October 2, 1997.
- Bearings shown refer to assumed datum and assume the North Line of section 24 as North 89°36'10" East.

#### Legal Description

Commencing at the Northwest corner of Section 24, Township 50 South, Range 42 East, Broward County, Florida; thence on the North line of said Section 24, run North 88°21'40" East, a distance of 57.11 feet to a point; thence continue on the North line of said Section 24, run North 89°36'10" East, a distance of 2968.70 feet to a point; thence run South 00°23'50" East, a distance of 249.80 feet, more or less to a point on the steel bulkhead as shown and recorded in Deed Book 337, page 526; public records of Broward County, Florida; thence on said steel bulkhead run South 89°30'19" West a distance of 8.27 feet to a point; thence run South 29°11'12" West a distance of 414.37 feet to the Point Of Beginning; thence continuing along last said bearing, a distance of 676.00 feet to a point; thence run North 89°30'19" East, a distance of 796.00 feet to a point; thence run North 07°47'43" East, a distance of 553.10 feet to a point; thence run North 89°30'19" East, a distance of 110.00 feet to a point; thence run North 00°29'41" West, a distance of 40.00 feet to a point; thence run South 89°30'19" West, a distance of 651.17 feet more or less, to the Point Of Beginning.

Said lands situate, lying and being in the City of Hollywood, Broward County, Florida, and containing 398,616 square feet or 9.1510 acres, more or less.

#### LEGEND

A = CENTRAL ANGLE (DELTA)	ELEV. = ELEVATION
R = RADIUS	O/S = OFFSET
A OR L = ARC LENGTH	A/C = AIR CONDITIONING
CH.BRG. = CHORD BEARING	C = CENTERLINE OF RIGHT-OF-WAY
TAN.BRG. = TANGENT BEARING	F.P.L. = FLORIDA POWER AND LIGHT CO.
P.O.C. = POINT OF COMMENCEMENT	S.B.T. = SOUTHERN BELL TELEPHONE
P.O.B. = POINT OF BEGINNING	B.C.R. = BROWARD COUNTY RECORDS
W/MCL CAP. WITH McLAUGHLIN ENGINEERING CO. CAP	D.C.R. = DADE COUNTY RECORDS
P.R.M. = PERMANENT REFERENCE MONUMENT	P.B.R. = PALM BEACH COUNTY RECORDS
CONC. = CONCRETE	O.R. = OFFICIAL RECORDS BOOK
C.B.S. = CONCRETE, BLOCK AND STUCCO	PG. = PAGE
I.C.V. = IRRIGATION CONTROL VALVE	R/W = RIGHT-OF-WAY
W.M. = WATER METER	C.O. = CLEAN OUT
B.F.P. = BACK FLOW PREVENTOR	C.L.F. = CHAIN LINK FENCE
D.B.H. = DIAMETER BREAST HEIGHT	P.C.D. = POLLUTION CONTROL DEVICE
TYP. = TYPICAL	EL. = ELEVATION
	A.R. = 3" WIDE ALUMINUM RAMP

#### CERTIFICATION

We hereby certify that this survey meets the minimum technical standards as set forth by the Florida Board of Professional Surveyors and Mappers in Chapter 61G17-6 Florida Administrative Code, pursuant to Section 472.027, Florida Statutes.

Dated at Fort Lauderdale, Florida, this 30th day of September, 2000.  
Revised to add additional elevations this 19th day of February, 2001.  
Revised to add additional elevations this 12th day of March, 2001.  
Elevations and Trees added this 3rd day of July, 2002. Location (South Portion)  
Additional Location and Elevations added this 4th Day of October, 2002. (East Portion)  
Asbuilt Location and Elevations added this 4th Day of APRIL, 2003.  
Additional improvements, elevations and lift station detail added this 15th day of January, 2007.  
New Soundings taken this 5th day of February, 2008 @ 9:45 AM.  
Resurveyed and additional elevations taken this 24th day of March, 2008.  
Additional Soundings taken this 11th day of September, 2009 @ 9:30 AM.  
Additional Soundings taken this 19th day of September, 2009 @ 10:00 AM.  
Contours added this 29th day of September, 2009.  
Docks Located this 1st day of December, 2009.

McLAUGHLIN-ENGINEERING COMPANY  
  
JERALD A. McLAUGHLIN  
Registered Land Surveyor No. 5269  
State of Florida.

#### OFFICE NOTES

FIELD BOOK NO. 1047/49, LB 26/71, LB 36/25, LB 56/6-7, LB 157/59, LB 210/5-7, PRINT & TDS 48" LB# 288/4-5, LB# 288/4-5

JOB ORDER NO. H5559 H9139 K3186 K3416 P1211 S2285 R3422 R3653 T4198, T4803, T4911, T6642.

CHECKED BY: T7112, T7541, U3100, U4088, U4198, U4311, U-5413

DRAWN BY: J.S.T. S.A.M. J.A.M., S.P., RDR, RDR

C: \RUDY\2010\U5752\dwg\U5752.dwg 4/19/2010 10:49:10 AM EDT

Sheet 2 of 2

00-3-131 (08)

FILE NO.: